

Download and install the APP CamHi . Make Sure Mobile with 3G/4G/WIFI  
 Network, Scan the following QR Code to download APP. Or search CamHi  
 on Google Play Store or APP Store.



IOS/Android APP QR

Connect camera with WIFI (AP hotspot itself) and make 4G card working  
 properly. Firstly pull on camera with power supply, make mobile connect to camera  
 hotspot itself, WIFI name starts with MIFI\*\*\* (figure 1), password is 1234567890  
 (figure 2). Then test 4G working properly. Make mobile test with internet, for  
 example, open your browser to check if it can open website or not. If ok, the 4G  
 is working properly, if not, please check if Sim Card is inserted in the correct  
 position or not and then restart camera.



Figure-1



Figure-2

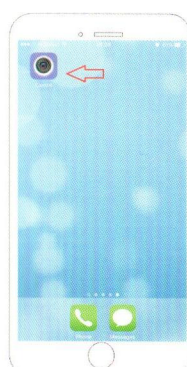


Figure-3

### 3.Add Camera on the APP CamHi

- 3.1 Open CamHi (figure 3),Click to add camera (figure 4), and then click "Search camera UID from LAN" (figure 5) (please note that Mobile already connect with WIFI signal MIFI\*\* through camera AP hotspot yet)
- 3.2 Search Camera from LAN, add the UID \*\*\*-234567 (figure P6)
- 3.3 Fill in the password (Default password is admin) (figure 7)
- 3.4 Click Done on the upper right, finish camera adding process.

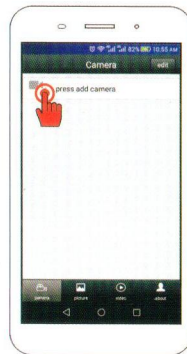


Figure-4

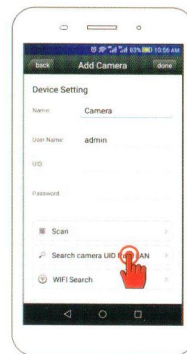
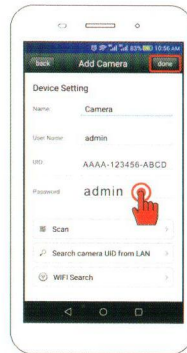


Figure-5



### 4.APP function instruction

- 4.1 View the Video After connection camera for a few seconds, camera will connect itself and show video automatically, then it will show status "online".  
 Camera Status: Connecting: camera is connecting with internet, time will differ accordingly based on your network conditions. Online: Camera connects normally
- 4.2 Delete Camera Click Edit, there has options for you to choose delete camera or not.



4.3 Video interface illustration

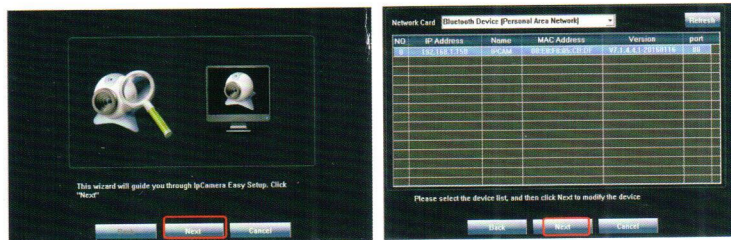
### Video Interface illustration

- : Click this icon, it will get snapshot ( pictures save in the folders snapshot folder on the mobile)
- : Local Record off
- : Local Record on
- : Click this icon, there has options as Resolution Mode, HD or Smooth HD: connect as first stream, Smooth HD: connected as second stream
- : Shut Off Camera
- : Click Can Set
- : Mirror And Flip

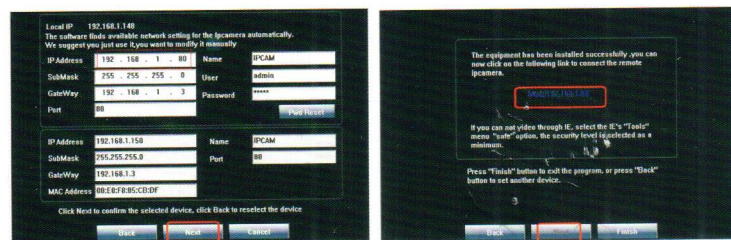
## Operation On The Computer

### 5. Connect the camera to modify the IP address

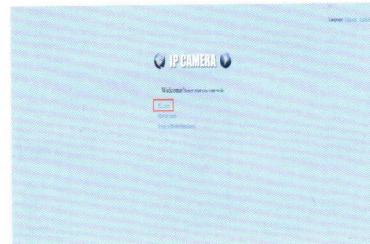
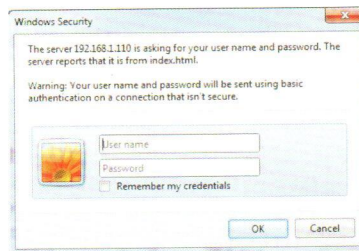
5.1 Pull on camera with power supply, connect the camera to router in the LAN then open the software "Search Tool", click the "Next", camera will show in the software itself, and camera IP address information as well. Choose the IP address, and Click "Next".



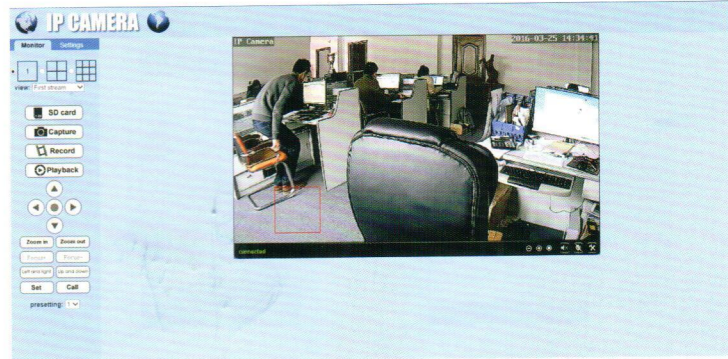
5.2 Software will assign the IP address based on the network condition in the LAN Automatically, Click "Next", and then double click the IP address.



5.3 After click the ip address from "Search Tools", Browser will remind you to fill in the Camera User and Password, (User: admin, none password) After enter into Camera interface, Click the "PC View"



5.4 Enter into and check Main page of Camera.



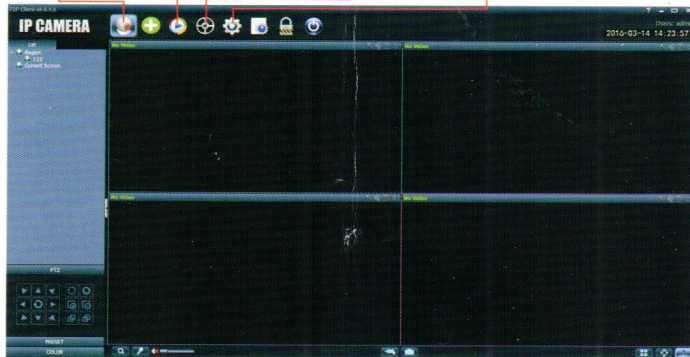


## 6. Computer clients setting

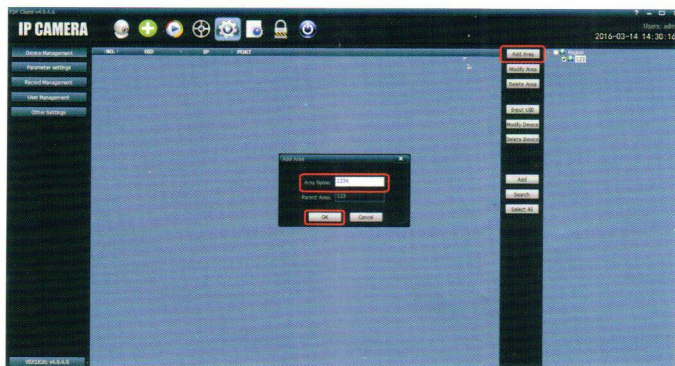
6.1. Power on the camera and connect to router via LAN. Install the clients HIP2P on the computer.



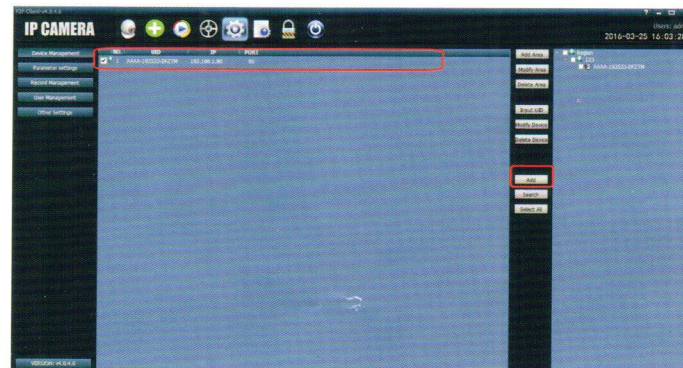
Preview Local playback Remote Playback Config



6.2. Config on the navigation bar (Remind you to input password, you can enter without password, you will see a new page. Add Area, Click and input area name you want. Click OK button to find the camera you want



6.3. Choose all coming IP camera ,and click "ADD" button on the right.



6.4. Click preview on the main page, double click the IP address on the left. You will see "Channel 01" appear and double click again to see the image on the right area. For more setting , please click system setting.

